

# Flexible Impeller Pumps (FIP) AC

## - Wash Down, Fire Fighting, Septic Handling and Circulation Pump

Photo: Marinamatur



Through their versatility and flexible design, these AC-powered Flexible Impeller Pumps can be customized uniquely for each area of application. The pumps handle most liquids and slurries. In the marine environment the pumps are specially suitable for bilge, wash down, fire fighting, septic handling and water circulation duties.

The capacities range from 20 l/min to 490 l/min. The pumps are characterized by their ease of service and maintenance. For 3-phase power source we offer the FIP20, FIP25, FIP40, FIP50 and the FIP65. Additionally, the FIP20, FIP25 and the FIP40 are available for single-phase power.



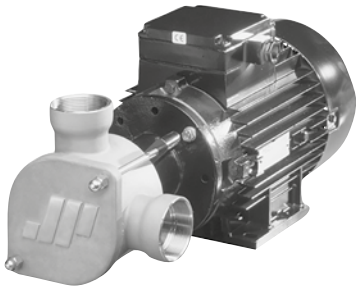
FIP-series  
Contact us for  
information about  
latest standards.

### ADVANTAGES OF FIP

Excellent self-priming capacity	A dry pump has a suction lift up to 5 meters within a few seconds.
Pulsation free and reversible flow	The FIP-pump gives a uniform flow without pulsation.
Compact design	The FIP has minimal outer dimensions compared to its capacity, which simplifies space and installation requirements.
Easy maintenance and quick to clean	Unique 3-piece design reduces maintenance and cleaning time to a minimum.

# Flexible Impeller Pumps (FIP) AC

Contact your sales representative to help configure the right FIP pump for your needed requirement.



## THE FIP STAINLESS STEEL VERSION

The FIP Stainless Steel line allows for a wide range of pump capacities for both hygienic and non-hygenic applications.

### FIP40SI

Suitable for discharge of septic tank. Motor sold separately.\*

Part No.	Description	Body	Connection	Impeller	Shaft	Shaft seal	Shaft end
To be Configured	FIP40SI-BSP02M01F90	Stainless steel	BSP	Neoprene	Double flat	Mechanical	Flange

## THE FIP BRONZE VERSION

Bronze pump for liquids such as saltwater, mineral oils, slurries, additives or abrasive products.

### FIP25B

Suitable for wash down, bilge, water circulation, etc. Motor sold separately.\*

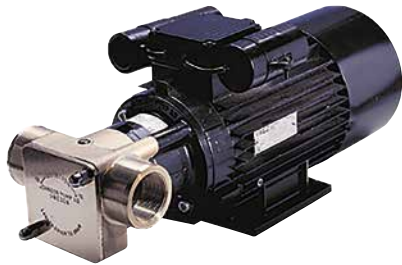
Part No.	Description	Body	Connection	Impeller	Shaft	Shaft seal	Shaft end
To be Configured	FIP25B-BSP00M01F80	Bronze	BSP	Neoprene	Double flat	Mechanical	Flange

### FIP40B

Suitable for wash down, bilge, water circulation, fire fighting reserve, etc. Motor sold separately.\*

Part No.	Description	Body	Connection	Impeller	Shaft	Shaft seal	Shaft end
To be Configured	FIP40B-BSP00M01F90	Bronze	BSP	Neoprene	Double flat	Mechanical	Flange

\* Motors for the FIP pumps are available as 4-, 6- or 8-pole with speeds between 700-1450 rpm.



## FIP MODEL SPECIFICATIONS

Example: FIP 20 SH - DIN 4 2 M01 P80  
 1 2 3 4 5 6 7 8

### 1. Family name

FIP = Flexible Impeller Pump

### 2. Pump size

20 25 40 50 65

Average inlet and outlet port diameter, mm

### 3. Material of pump body and cover

SH = Stainless steel, hygienic version  
 SI = Stainless steel, industrial version  
 B = Bronze

### 4. Port/connection

FIP 20/25SI, FIP 25/40B  
 BSP = BSP thread/hose combination  
 NPTF = NPTF thread/hose combination\*

FIP 40/50/65SI

BSP = BSP thread  
 NPTF = NPTF thread\*  
 \* NPTF available on request.

FIP 20/25/40/50/65SH

DIN = DIN 11851  
 SMS = SMS 1145  
 PLN = Plain without threaded ports  
 CLP = Clamp according to SMS 3017 (TriClamp)

### 5. Impeller code\*

0 = Neoprene industrial version – standard pressure  
 3 = EPDM, FDA, food grade – high pressure  
 4 = Neoprene, FDA, milk grade  
 6 = Neoprene, industrial version – high/intermediate pressure  
 7 = EPDM, FDA, food grade – standard pressure  
 9 = Nitrile, splined drive – standard pressure

\* Impeller options are dependent on pump.

### 6. Shaft

Bronze  
 0 = Splines – Stainless steel

### Stainless steel pumps

0 = Splines – Stainless steel  
 2 = Double flat – Stainless steel

### 7. Shaft seals

M = Single mechanical seal  
 L = Lip seal

### Material of single mechanical seals

01 = Carbon/ceramic/nitrile  
 03 = Silicon carbide/silicon carbide/FPM (DIN/ISO) / FKM (ASTM) (on request only)  
 06 = FDA Approved mechanical seal

### 8. Shaft end

P = Pedestal  
 F = Flange for IEC motor  
 80 = FIP 20/25 – Pedestal; shaft height, mm  
 Flange; IEC motor size  
 90 = FIP 40 – Pedestal; shaft height, mm  
 Flange; IEC motor size  
 100 = FIP 50 – Pedestal; shaft height, mm  
 Flange; IEC motor size  
 112 = FIP 65 – Pedestal only; shaft height, mm

